

Plan: Kennedy Boulevard
scale: 1" = 20'

ISLAND TREES SHALL BE:
CHANTICLEAR PEAR (PYRUS CALLERYANA 'CHANTICLEAR'), 2" - 2 1/2" CAL. B&B
STREET TREES (GRASS STRIP) SHALL BE:
BOSQUE LACEBARK ELM (ULMUS PARVIFOLIA 'BOSQUE'), 2 1/2" - 3" CAL. B&B

CONCRETE IMPROVEMENTS:
REMOVE CONCRETE CURB, 630 L.F. (N.S.P.)
REMOVE CONCRETE SIDEWALK/APRON, 215 S.Y. (N.S.P.)
REMOVE CONCRETE SIDEWALK/APRON, 35 S.Y. (N.S.P.)
CONSTRUCT 6"x8"x18" CONCRETE CURB, CL. B, W/ SELECT BACKFILL DESIGNATION I-11 AND DENSE GRADED AGGREGATE SUBBASE, 80 L.F.
CONSTRUCT GRANITE CURB W/ SELECT BACKFILL, DESIGNATION I-11 AND DENSE GRADED AGGREGATE SUBBASE, 560 L.F.
CONSTRUCT CONCRETE SIDEWALK, 4" THICK, CL. B, W/ SOIL AGGREGATE SUBBASE, 4" THICK, 10 S.Y.
CONSTRUCT BRICK SIDEWALK W/ CONCRETE BASE, 4" THICK, CL. B, AND SOIL AGGREGATE SUBBASE, 4" THICK, 2,420 S.F.
CONSTRUCT BRICK SIDEWALK/DRIVEWAY W/ CONCRETE BASE, 6" THICK, CL. B, AND DENSE GRADED AGGREGATE SUBBASE, 4" THICK, 130 S.F.
CONSTRUCT CONCRETE APRON, 6" THICK, CLASS 'B', WITH DENSE GRADED AGGREGATE SUBBASE, 4" THICK, 25 S.Y.

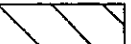
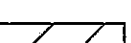
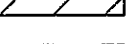
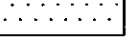
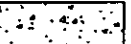
THE CONTRACTOR SHALL UTILIZE THE EXISTING ROADWAY AS A CONSTRUCTION ENTRANCE. THE ROADWAY SHALL BE CLEANED AS NEEDED OR AS DIRECTED BY THE CAMDEN COUNTY SOIL CONSERVATION DISTRICT AND THE BOROUGH ENGINEER, TO ELIMINATE TRAFFIC HAZARDS, DUST, ETC. (SEE SOIL CONSERVATION NOTES) (N.S.P.)

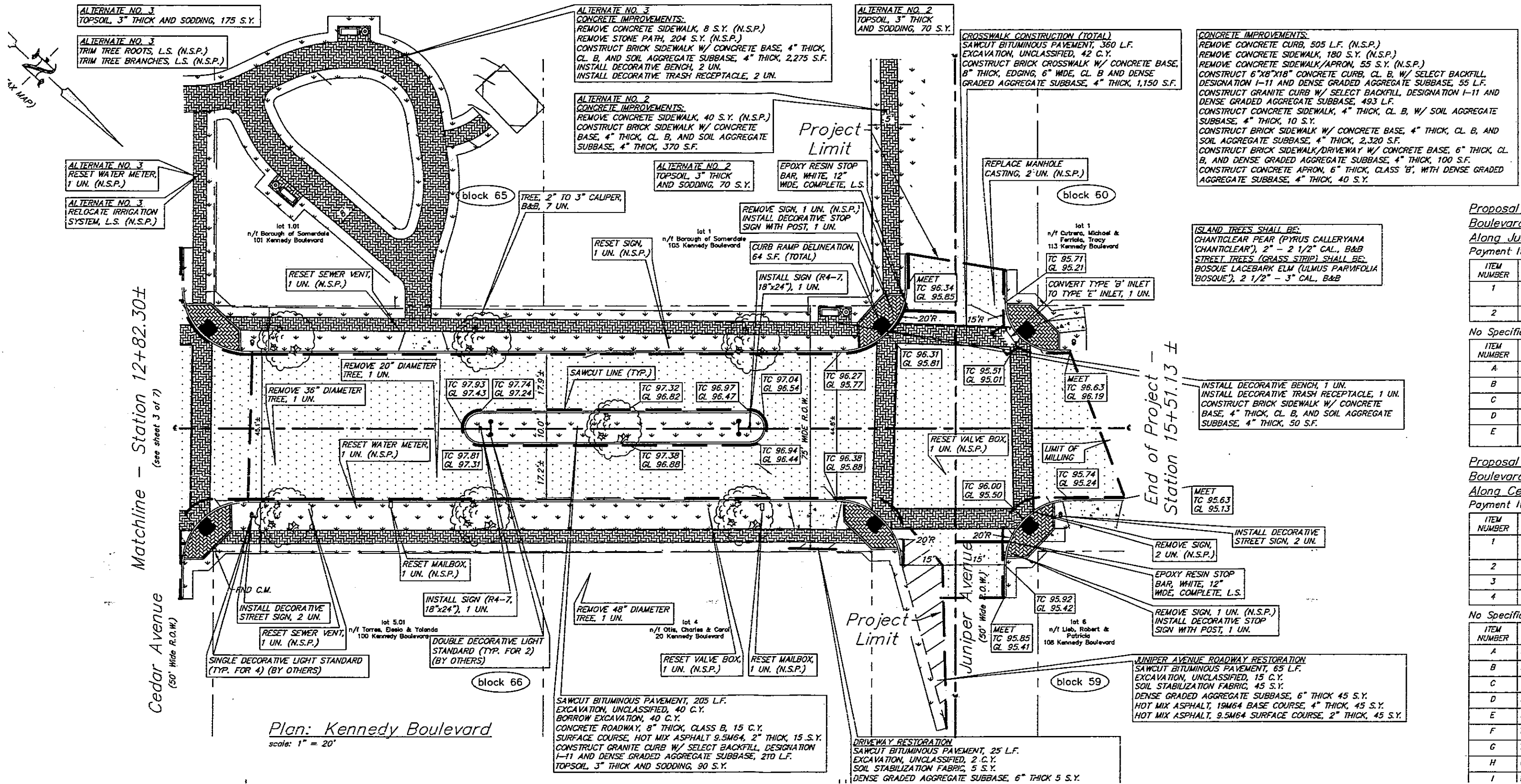
ALL CONCRETE CURB/DRIVEWAY DESIGNATED FOR REMOVAL SHALL BE REMOVED TO THE NEAREST EXPANSION JOINT. IN LOCATIONS WHERE NO JOINTS EXIST, THE CONCRETE CURB SHALL BE SAWCUT, VERTICALLY, TO ALLOW FOR THE REMOVAL OF THE EXISTING CURB/DRIVEWAY

(N.S.P.) INDICATES NO SPECIFIC PAYMENT WILL BE MADE FOR THE ITEM. THE COST SHALL BE INCLUDED IN VARIOUS ITEMS IN THE PROPOSAL

CRUSHED OR RECYCLED CONCRETE OR CRUSHED OR RECYCLED ASPHALT WILL NOT BE ACCEPTED AS A SUBSTITUTE TO DENSE GRADED AGGREGATE FOR THIS PROJECT

Legend:

-  ROADWAY
EXCAVATION, UNCLASSIFIED
HOT MIX ASPHALT, 9.5M64 SURFACE COURSE, 2" OVER CONCRETE ROADWAY, 8" THICK, CLASS B
-  DRIVEWAY
EXCAVATION, UNCLASSIFIED
HOT MIX ASPHALT, 9.5M64 SURFACE COURSE, 2" OVER HOT MIX ASPHALT, 19M64 BASE COURSE, 4" OVER DENSE GRADED AGGREGATE SUBBASE, 6" 7
-  MILLING PAVEMENT, 2" TO 3" THICK
HOT MIX ASPHALT, 9.5M64 SURFACE COURSE, 2"
-  CONCRETE SIDEWALK, 4" THICK, CL. B, W/ SOIL AGGREGATE SUBBASE, 4" THICK OR
CONCRETE APRON, 6" THICK, CLASS 'B', WITH DENSE GRADED AGGREGATE SUBBASE, 4" THICK
-  BRICK SIDEWALK W/ CONCRETE BASE, 4" THICK, SOIL AGGREGATE SUBBASE, 4" THICK OR



Proposal
Boulevard
Along Juniper
Payment It

ITEM NUMBER
1
2

No Specific

ITEM NUMBER
A
B
C
D
E

Proposal
Boulevard
Along Cedar
Payment It

ITEM NUMBER
1
2
3
4

No Specific

ITEM NUMBER
A
B
C
D
E
F
G
H
I