

VICINITY MAP
SCALE: 1" = 2000'

GENERAL NOTES

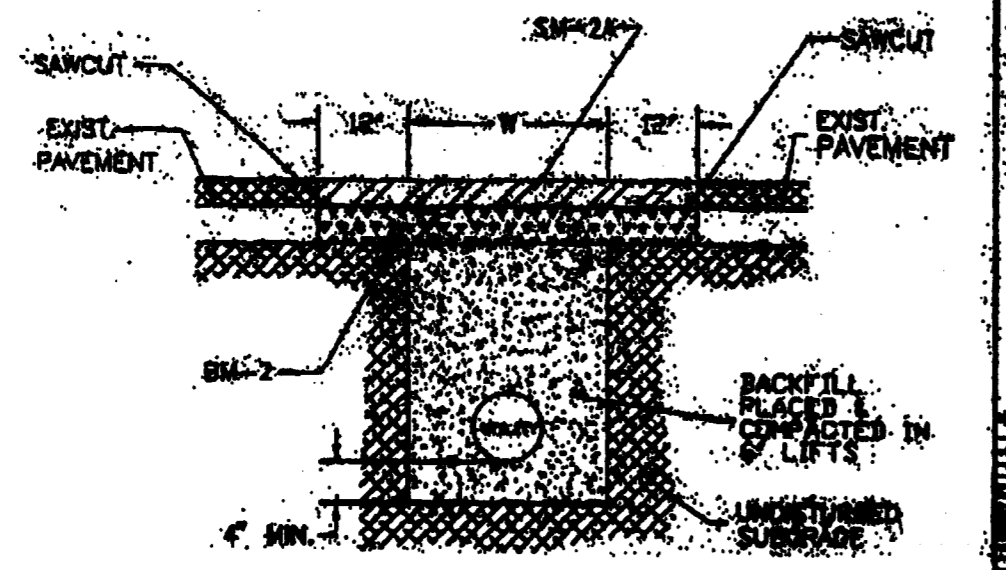
1. SITE ADDRESS: 3181 & 3199 S. CRATER ROAD
PETERSBURG, VIRGINIA 23805
2. OWNER: UNDER CONTRACT WITH DEVELOPER
WAWA INC
260 W. BALTIMORE PIKE
WAWA, PA 19063
CONTACT: GREG HARVEY
PHONE: (610) 925-3495
FAX: (610) 925-0381
3. USE: CONVENIENCE STORE
4. ZONING: B-2
5. TAX PARCEL NO.: 081-05-007, 081-05-008 & 081-05-009
6. SITE AREA: 4.22 AC.
DISTURBED AREA:
7. WATER: CITY
8. SEWER: CITY
9. BUILDING AREA/NO. OF STORIES: 5,913 S.F./ ONE STORY
10. PARKING REQUIRED: 1 PER 125 SF. = 48 SPACES
11. PARKING PROVIDED: 70 SPACES (3 HANDICAP SPACES)

LEGEND

- (A) BOLLARD
- (B) BUMPER BLOCK
- (C) CONCRETE SIDEWALK
- (D) V.D.O.T. STOP SIGN BY DEVELOPER
- (H) HANDICAP PARKING & SIGN
- (M) METER WATER 1" COUNTY FORCES UTILITY CONTR. EXISTING BEYOND W.M. BY PLUMB.
- (I) IRRIGATION METER
- (P) CONNECTION BY PLUMBER SEWER LATERAL 4" UTILITY CONTR. EXISTING
- (W) WATER LATERAL 2" COUNTY FORCES UTILITY CONTR. EXISTING

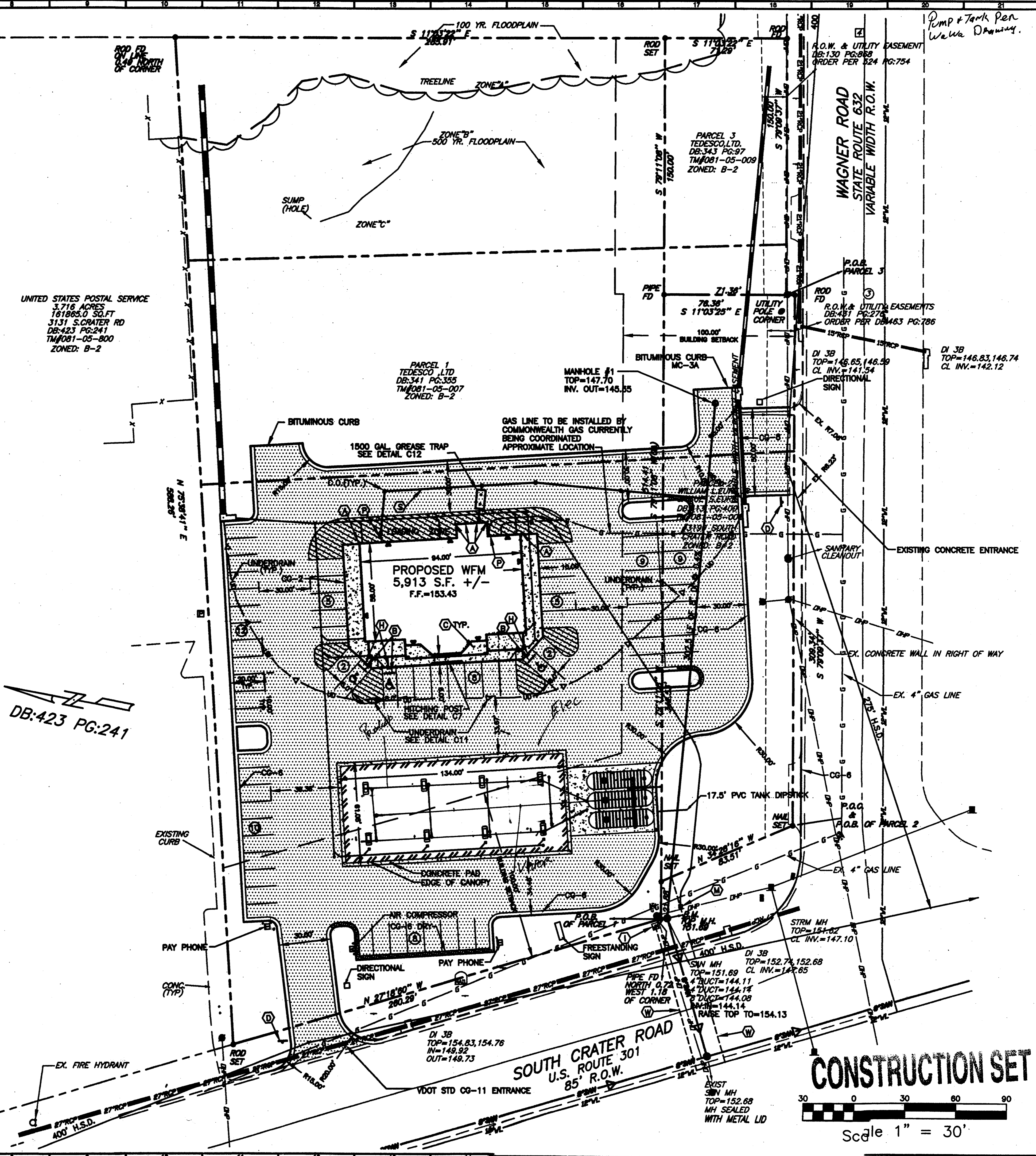
	SM-2A	BM-2
BUS ROUTE	2'	4'
ARTERIAL STREET	2'	6'
COLLECTOR STREET	1 1/2'	2 1/2'

*NOTE: ON MATCH EXISTING PAVEMENT, WHICHEVER IS GREATER



NOT TO SCALE

PAVEMENT REPLACEMENT



PLANNERS • ARCHITECTS
ENGINEERS • SURVEYORS

1206 Corporate Circle
Roanoke, Virginia 24018
Phone: 804/772-8580
FAX: 804/772-8080

801 Branchway Road
Suite 100
Richmond, Virginia 23268
Phone: 804/784-6871
FAX: 804/784-8888

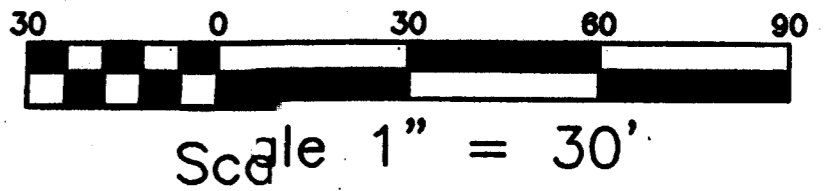
11038 Lakeside Parkway
Suite 1
Arland, Virginia 23006
Phone: 804/650-2888
FAX: 804/650-2087

WAWA - CRATER ROAD
LAYOUT AND UTILITY PLAN
CITY OF PETERSBURG, VIRGINIA

DRAWN BY: KED
DESIGNED BY: KED
CHECKED BY: AMS
DATE: 03-19-01
REVISIONS:
04-13-01

SCALE: 1" = 30'
SHEET NO.
C3
JOB NO.
C0000230.00

CONSTRUCTION SET



689#